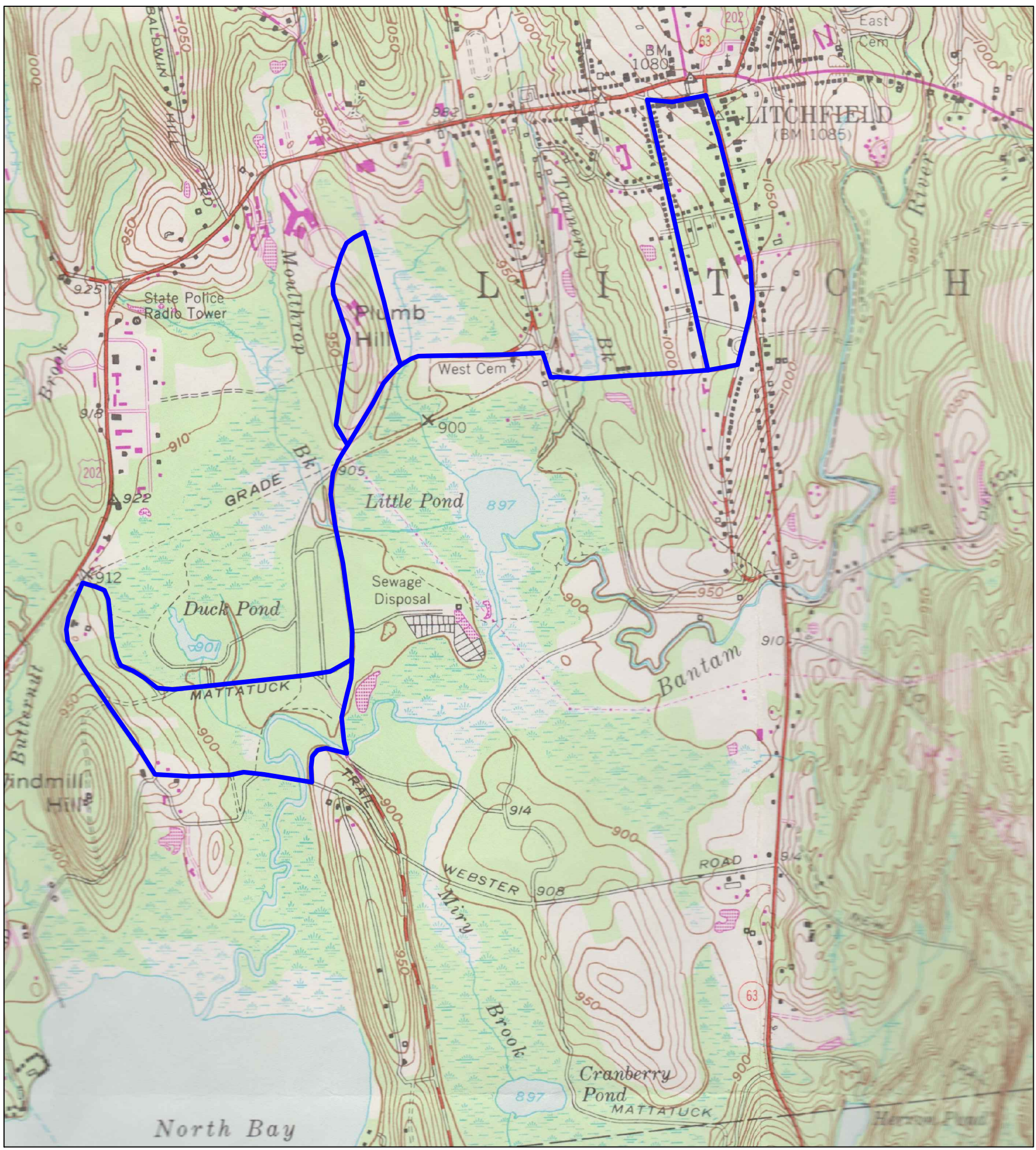


Litchfield Hills Road Race Course

Profile of Hills Drawing

Upper green line is at 10' vertical to 1 foot horizontal.
Lower purple line is at one to one.
Horizontal distances in feet over 7.1 miles = 37,600'+
Vertical distance above mean sea level.



Based on USGS Contour Map.
Dated 1956 with 1984 revisions.
Route covered is shown on the map in blue line.
No precision survey instrument was used.
Brief field survey was done. Comments welcome.
Drawing is meant to be paperless.
Use .pdf zoom function.

*The intention of this drawing is to:
promote the race and
assist runners with strategy.*

